

IW-100 A1 11n/ac 2.4/5Ghz In Wall PoE Access Point

Package Contents

- IW-100 A1 Main Unit x 1
- Faceplate (Silver) x 1
- Faceplate (Gold) x 1
- QIG Booklet x 1
- Warranty Card x 1

IW-100 A1(US)



IW-100 A1(EU)



*Different areas of sales the accessories Faceplate will use the US or European type

<http://www.cerio.com.tw>

Technical Support Call
support@cerio.com.tw

@ Hardware Installation

Installation

This section provides instructions on how to first-time install and the configuration for IW-100 A1 11n/ac 2.4/5Ghz In Wall PoE Access Point .

Hardware Configuration

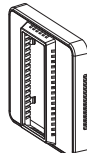
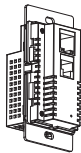
Please note IW-100 A1 size and depth should comply with the dimension of the wall or object you want to install. Before installation please measure the thickness of the wall or object complies with the above. Please review the product specifications for detailed information prior to purchase.



Installation the In wall Access Point of IW-100 A1 (Make sure the In Wall AP is included as pictured below)

✓ InWall AP Main Unit

✓ Faceplate



Step 1: Pulled out on the wall for RJ45 Ethernet cable(With PoE Source). Use the RJ45 Ethernet cable(connected to the IW-100 A1 in rear of the PoE port.

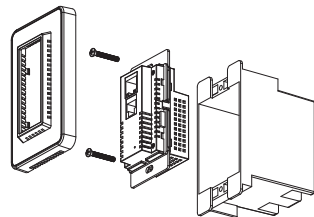
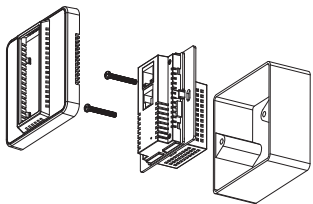
Step 2: Slide the Wall AP into the frame until it is flushed into the Wall.

Step 3: Insert screws into the frame fixed on the embedded box.

Step 4: The Faceplate cover into on the IW-100 A1.

■ Main Unit with EU-Type Faceplate
For Europe / China Specification

■ Main Unit with US-Type Faceplate
For U.S.A. / Japan Specification



* Different areas of sales the accessories Faceplate will use the US or European type

Panel Function Descriptions

1. Screw Holes Position:

Insert screws into the frame fixed on the wall embedded box.

2. LAN Ethernet port / ETH OUT :

This port is a Local LAN port that for clients to access network via this port.

3. PHONE Line OUT Port:

RJ-11 cable into the LINE port on the IW-100 A1, and then plug the other end into your phone .

4. Reset Button:

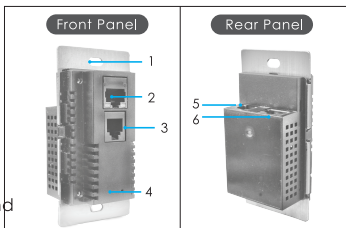
Press and hold the Reset button for more than 10~15 seconds to reset the system to default configurations.

5. PHONE Line IN Port:

Connect the Modem interface of a splitter using a telephone cable.

6. LAN Ethernet Port / ETH IN (PoE):

Connect one end of your Ethernet cable into the LAN (PoE) port on the IW-100 A1 and the other end into on your PoE Switch or PoE Injector.



【 Connector your PoE power source 】



Before installation, please observe the following

The Package Content not include Power (PSE) source.This product only has Power Over Ethernet (PoE PD) Power input design, Power source will require Standard 802.3af / at PoE (PSE) device . (PoE Injector or PoE Switch)

【 Network Connecting 】

1. Please use an RJ-45 Ethernet cable to connect your PC / NB to the IW-100 A1 in front of the LAN port.
2. Turn on your computer (PC or Notebook) begins the first time login IW-100 A1 WEB management. (Please go to @ First Setting IW-100 A1 UI Page)

@ First Setting IW-100 A1 UI Page

Configure IW-100 A1 through Web

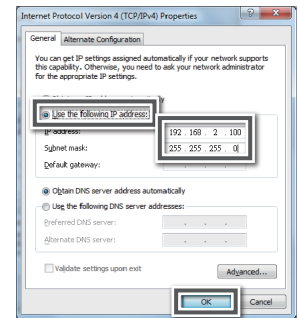
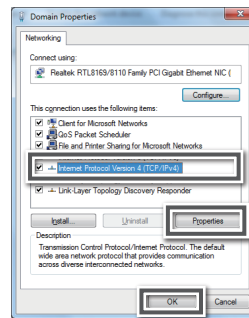
IW-100 A1 supports web-based configuration. Upon the completion of hardware installation, Can be configured through a PC/NB by using its web browser such as Internet Explorer or Firefox or Google Chrome .

IP Segment Set-up for Administrator's PC/NB

Set the IP segment of the administrator's computer to be in the same range as IW-100 A1 for accessing the system. Do not duplicate the IP Address used here with IP Address of 100GX-N or any other device within the network.

Example of Segment: (Local PC as 192.168.2.100)

1. Go to Start → Settings → Control Panel
2. **If you are Windows XP user**, please do Double click the icon Network
3. **If you are Windows Vista/7/8/10 user**, please Click **Network and Sharing**
4. Highlight the icon Local Area Connection, right click your mouse, and click Properties
5. Click Network and Internet Connections
6. Select **"Use the following IP address"**, and type in **IP Address : 192.168.2.100** and **Subnet mask : 255.255.255.0**, Press "OK" button to close this page.
7. Press OK to close the Local Area Connection Properties window



Notice

If you can't to login to IW-100 A1 WEB management interface , please reset default the IW-100 A1 to factory default (Press the "reset " button for 10-15 seconds located on rear panel then release it and IW-100 A1 will automatically restart and restore to default settings.) If you still can not login then try to login again and make sure there is no others network devices use the same IP address with IW-100 A1.

Launch Web Browser

1. Use your browser to access the web management interface of system by entering the IW-100 A1 default IP Address **http://192.168.2.254** , in the browser URL field, and then press Enter.

Login Username : **root**
Password : **default**

Choose & check your system language

Please click 「System」 → 「Management」 and select your Language to finish System Language setting .

If you have any questions regarding the use of advanced settings, please visit our website at www.cerio.com.tw to view the latest product manual.